

# PICUS DUO OEM

## MOBILE & READY FOR INTEGRATION

The **PICUS DUO** is also available in an **OEM** version. Housed in a standard 19" enclosure, the **PICUS DUO OEM** is made for easy integration into your imaging device.

Fiber-coupled outputs allow flexible pulse delivery offside an optical table. With the same specifications as the table-top version, the **PICUS DUO OEM** enables coherent Raman imaging in a multitude of environments.

### STANDARD 19" HOUSING

- Computer-controlled operation
- Air-cooled

### COMFORTABLE FIBER DELIVERY

- Delivery by photonic-crystal fiber
- Pre-compensated dispersion

### MOBILE OPERATION

- Proven shock resistance up to 25 m/s<sup>2</sup>
- Same specs as table-top version



### Applications

Fiber-delivered laser output  
Portable microscopes  
Fiber-coupled endoscopes

*Contact us for  
various  
customizations!*

# Product Specifications

Optical	Output A	Output B
Tuning range	770 - 980 nm (Signal)	1022 - 1052 nm
Tuning speed	<5 ms	<1 ms
Average power	100 - 300 mW	200 - 400 mW
Covered wavenumbers	700 - 3200 cm <sup>-1</sup>	
Pulse duration	7 ps	
Spectral bandwidth	< 12 cm <sup>-1</sup>	
Repetition rate	40.5 MHz	
RMS noise	< 1 %	
Polarization	linear, 100:1	

## Electrical

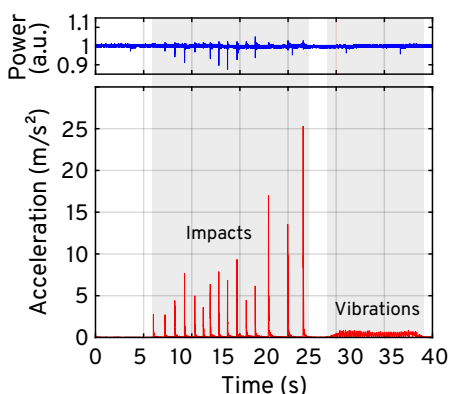
Interfaces	Communication through USB or RS232 Trigger in for high speed wavelength tuning Monitor out for external synchronisation
Software interfaces	GUI and custom serial API, e.g., via Python & Matlab

## Mechanical

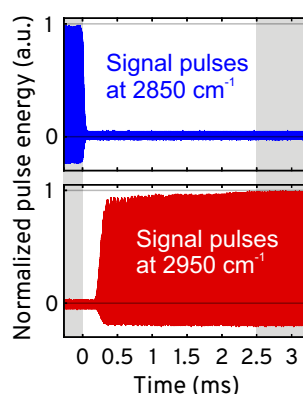
Laser head dimension	45x45x13 cm <sup>3</sup>
Laser controller dimension	43x31x13 cm <sup>3</sup>
Cooling	Air-cooled
Weight	25 kg
Standard umbilical length	2 m

# Performance

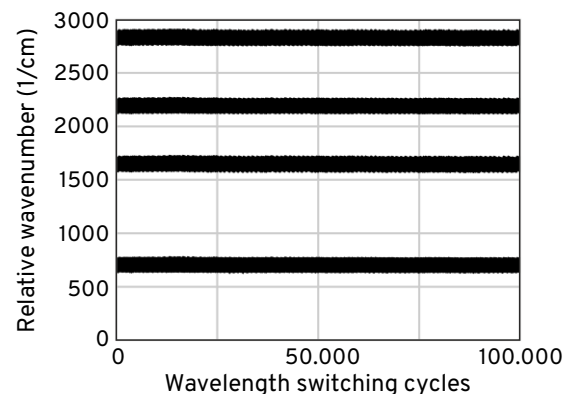
Shock test on laboratory cart



Ultra-fast switching



Reliable switching



info@refined-lasers.com  
www.refined-lasers.com



Refined Laser Systems GmbH  
Mendelstrasse 11  
48149 Münster  
Germany

The product is constantly being improved, therefore the specifications are subject to change without notice. March 2021 | Rev. 2.0